

ROAD INDEX

M.V. = MIDDLEFIELD VILLAGE

A	ADAMS RD. D6	I	
B	BRIDGE RD. D6-E6 BUNDYSBURG RD. F1-F7 BURTON WINDSOR RD. A2-B1 BUTTON ST. (M.V.) B4	J	JOHNSON ST. (M.V.) B4
C	CEDARWOOD CT. (M.V.) B4 CHIPMUNK LN. A5-A6 CLOVERDALE DR. B5 CRESTWOOD DR. (PVT) B4	K	KENWOOD ST. (M.V.) B5 KINSMAN RD. A4-F4
D	DURKEE RD. A1-B1	L	LAKE AVE. (M.V.) B4-B5 LAKEVIEW DRIVE (M.V.) B4 LANERN COURT (M.V.) C4 LINDA AVE. (M.V.) B4
E	E HIGH ST. (M.V.) B4-C4 ELMWOOD ST. M.V. EDGEWOOD DR. M.V.	M	MADISON RD. D1-C7 MAPLE AVE. (M.V.) B4 MEADOW VIEW PL. A4-B4 MILL ST. (M.V.) B4
F	GEORGIA RD. A5-B5 GLEN VALLEY DR. (M.V.) GROVEST. (M.V.) GURA RD. A1	N	NANTUCKET DR. (M.V.) B4 NAUVOO RD. B3-F3 NEWCOMB RD. B5-B7 N. STATE AVE. (M.V.) B4 NORTH VIEW DR. (M.V.) B4
G	HAYES RD. E2-E7 HILLCREST AVE. (M.V.) C4 HOSMER RD. D7	O	OAKDALE (M.V.) B4 OLD STATE RD. A1-D7
H		P	PETERS RD. D2-F2 PIERCE ST. (M.V.) B4
I		Q	RIDGEWOOD DR. (M.V.) B4
J		S	SHEDD RD. A7-E7 S. STATE AVE. (M.V.) B4-B5 SPERRY LN. (M.V.) B4 SPRINGDALE AVE. (M.V.) B4 STANDISH AVE. (M.V.) B4 STATION RD. A1-A2 SWINE CREEK RD. C6-F7
K		T	THOMPSON AVE. (M.V.) C4
L		U	
M		V	VALPLAST ST. (M.V.) B5
N		W	W. HIGH ST. (M.V.) B4
O		X	
P		Y	
		Z	

- 1 CARDINAL JUNIOR HIGH SCHOOL
- 2 MIDDLEFIELD ELEMENTARY SCHOOL
- 3 CARDINAL HIGH SCHOOL
- 4 AMISH SCHOOL
- 5 AMISH SCHOOL
- 6 AMISH SCHOOL
- 7 AMISH SCHOOL
- 8 THE FIRST METHODIST CHURCH
- 9 WESLEYAN METHODIST CHURCH
- 10 MENNONITE CHURCH
- 11 ST. LUCY'S CATHOLIC CHURCH
- 12 HAYES CORNERS CEMETERY
- 13 MIDDLEFIELD CEMETERY
- 14 UNITED STATES POST OFFICE
- 15 MIDDLEFIELD VOL. FIRE DEPT.
- 16 MIDDLEFIELD MUNICIPAL CENTER
- 17 MIDDLEFIELD PUBLIC LIBRARY
- 18 BETHESDA NURSING HOME
- 19 MIDDLEFIELD TOWN HALL

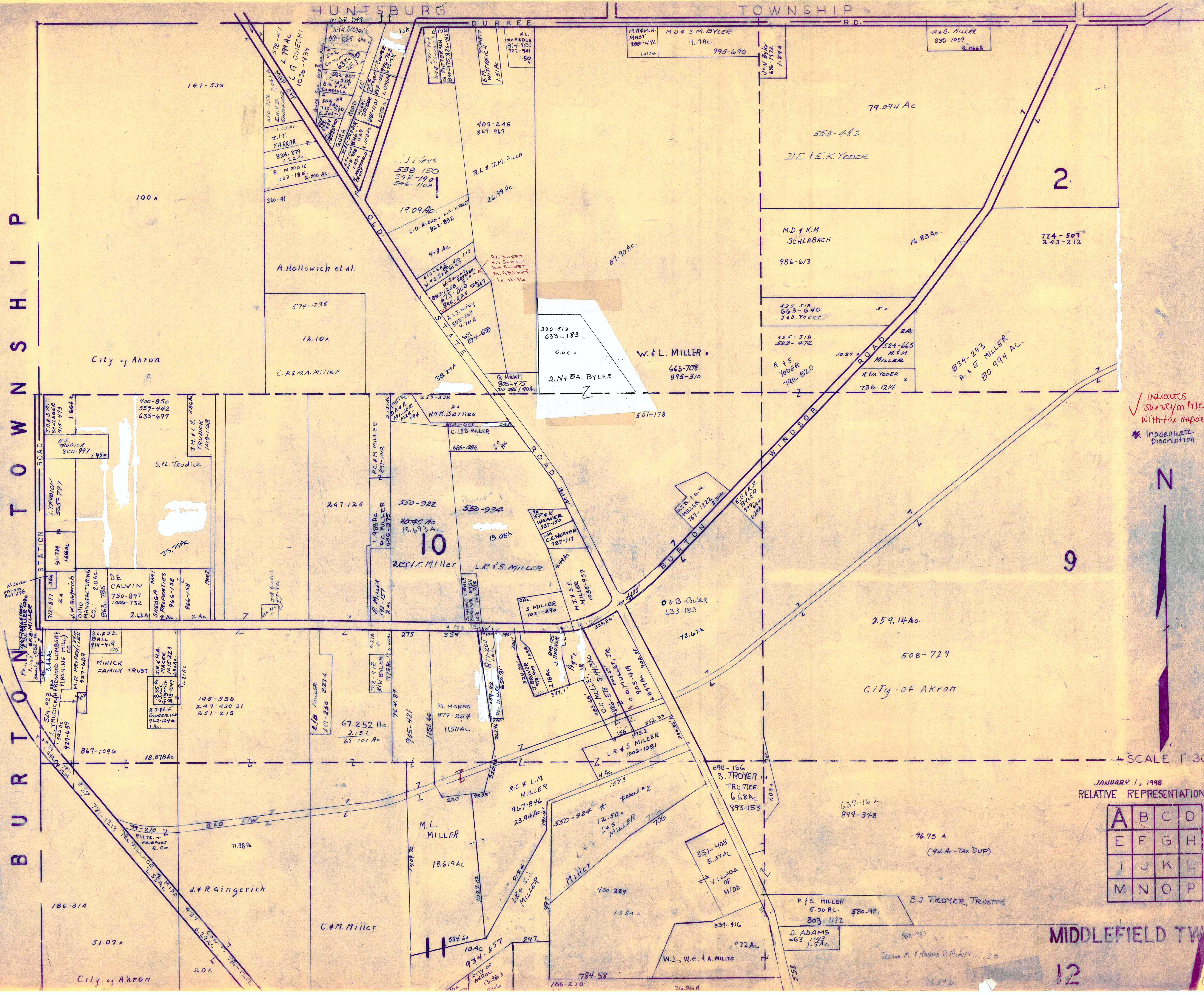
MIDDLEFIELD TOWNSHIP

SCALE: 1"=2000'

ROBERT L. PHILLIPS,
GEORGIA COUNTY ENGINEER

--- UNPAVED ROADS
--- PAVED ROADS
--- RAILROAD

--- TOWNSHIP LINE
--- COUNTY LINE
--- VILLAGE LINE



B U R T O N T O W N S H I P

HUNTSBURG TOWNSHIP

✓ indicates survey on file with tax map dept.
 * Inadequate Description

N

SCALE 1" = 300'

JANUARY 1, 1996
 RELATIVE REPRESENTATION

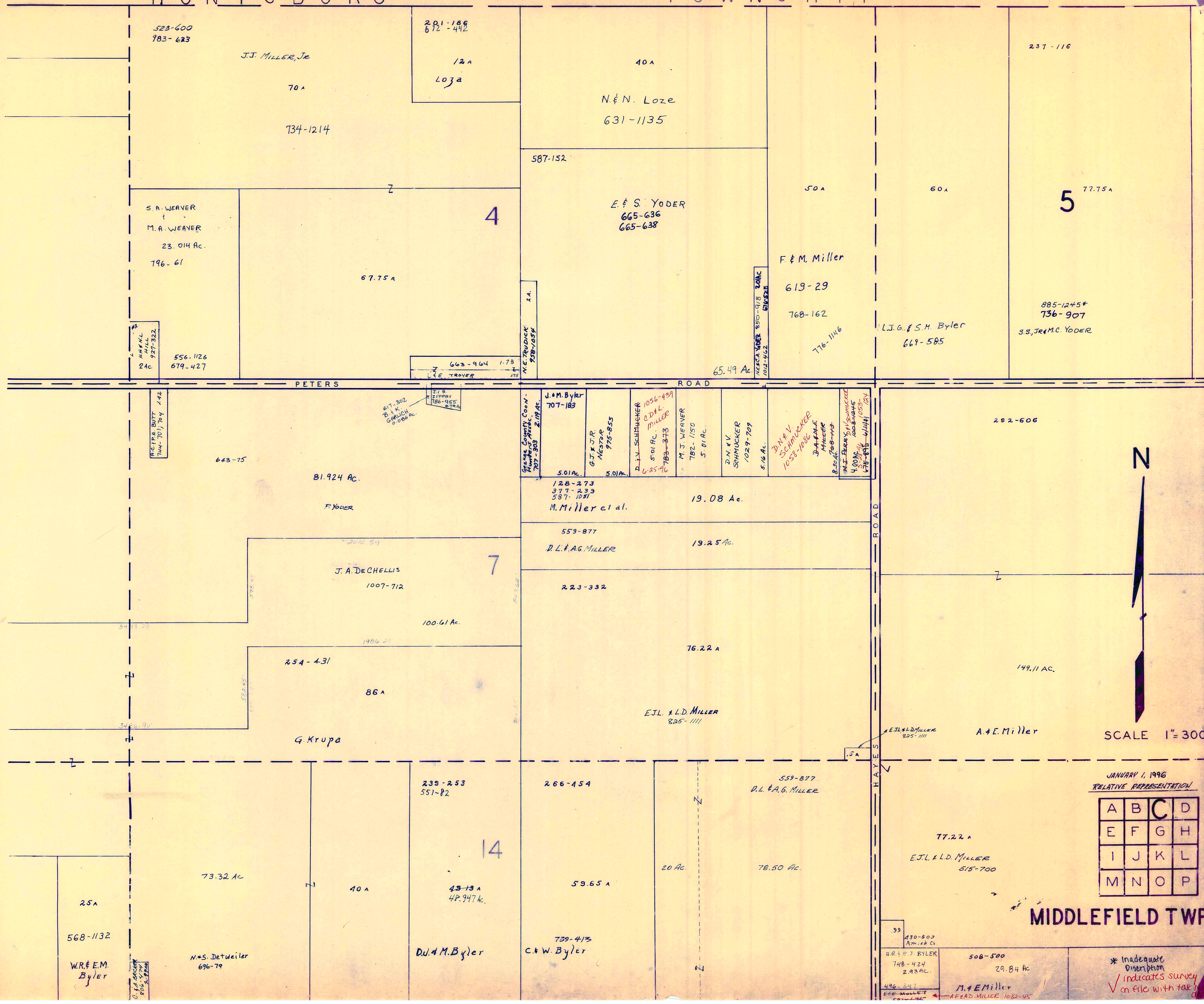
A	B	C	D
E	F	G	H
I	J	K	L
M	N	O	P

MIDDLEFIELD TWP

12

HUNTSBURG

TOWNSHIP



237-116
5 77.75 A
885-1245*
736-907
S.S. & M.C. YODER

523-600
983-623
J.J. MILLER, Jr.
70 A
734-1214

201-186
672-442
12 A
Loza

40 A
N. & N. LOZE
631-1135

S. A. WEAVER
M. A. WEAVER
23.014 Ac.
796-61

E. & S. YODER
665-636
665-638

F. & M. Miller
619-29
768-162

L.J.G. & S.H. Byler
669-585

H.M. MILLER
927-322
2 AC
556-1126
679-427

603-964
E. TROVER

65.49 Ac

PETERS ROAD

R.C. JRA. BOTT
744-707
704

617-302
B.K. GRANCH
0.086 Ac.

J.M. Byler
707-183

G.J. & J.R. NESTOR
975-855

D.L. SCHMUCKER
1056-489
O.D. & L. MILLER
501 Ac.
783-373
625-76

M.J. WEAVER
782-150
5.01 Ac.

D.N. & V. SCHMUCKER
1029-709
5.16 Ac.

D.N. & V. SCHMUCKER
1053-1086

M.J. WEAVER
782-150
5.01 Ac.

M.J. WEAVER
782-150
5.01 Ac.

643-75
81.924 Ac.
F. YODER

128-273
377-239
587-1037
M. Miller et al.
19.08 Ac.

559-877
D.L. & A.G. MILLER
19.25 Ac.

2010 54
J. A. DECHELLIS
1007-712
100.61 Ac.

254-431
86 A

G. Krupa

223-332
76.22 A

E.J.L. & L.D. MILLER
825-1111

282-606

149.11 AC.

A. & E. Miller



SCALE 1" = 300'

25 A
568-1132
W.R. & E.M. Byler

73.32 Ac
N. & S. Detweiler
696-79

43-13 A
48.947 Ac.
D.L. & M. Byler

59.65 A
739-413
C. & W. Byler

20 Ac

78.50 Ac.

559-877
D.L. & A.G. MILLER

77.22 A
E.J.L. & L.D. MILLER
515-700

JANUARY 1, 1996
RELATIVE REPRESENTATION

A	B	C	D
E	F	G	H
I	J	K	L
M	N	O	P

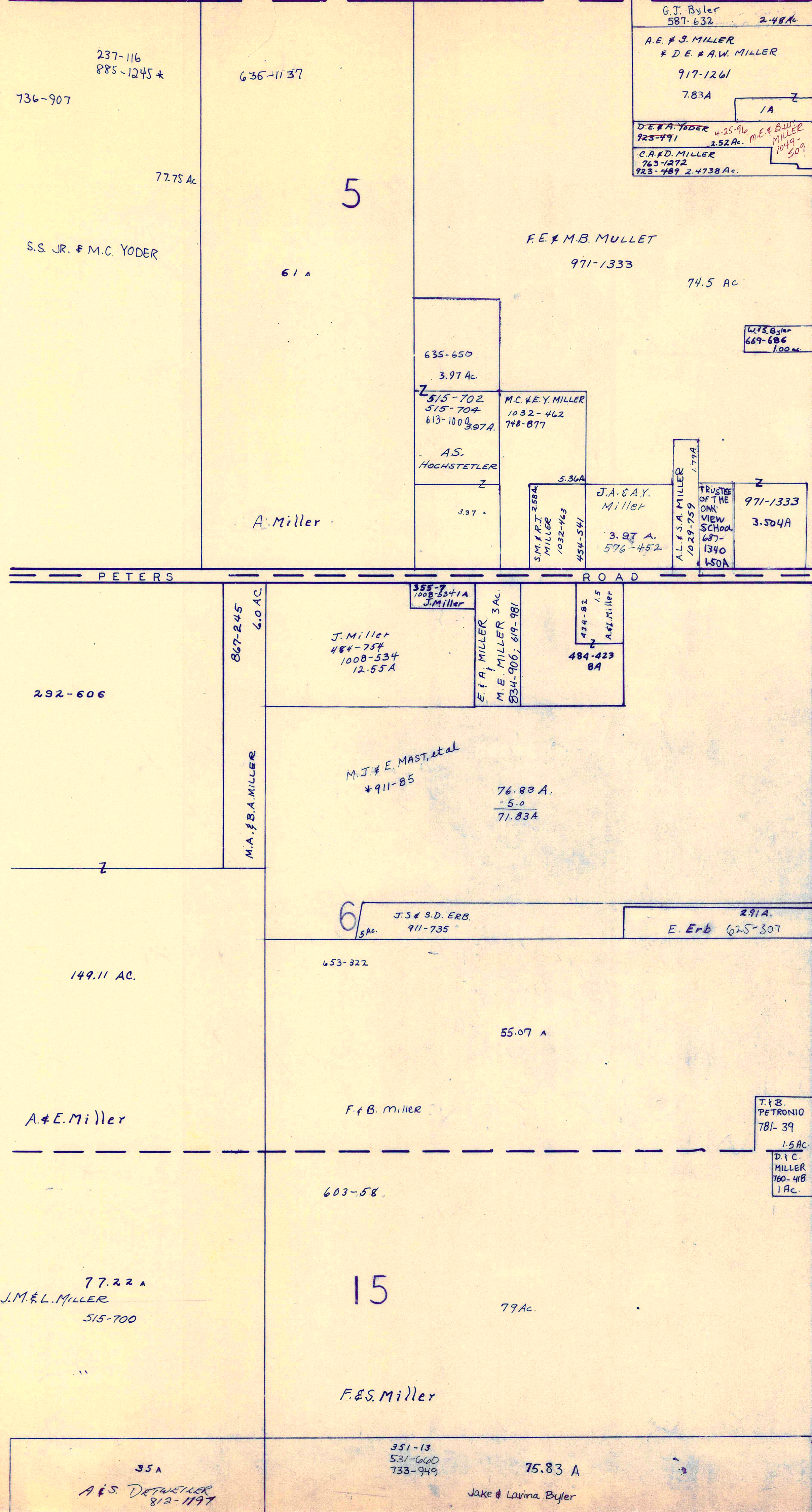
MIDDLEFIELD TWP

430-602
A.M. & C. Co
R.R. & F. BYLER
748-424
2.93 AC.
496-247
E.E. MILLER

508-500
29.84 Ac
M. & E. Miller
A.F. & D. MILLER 1083-45

* Inadequate
Description
✓ indicates survey
on file with tax map

HUNTSBURG TOWNSHIP



TRUMBULL COUNTY



SCALE 1" = 300'

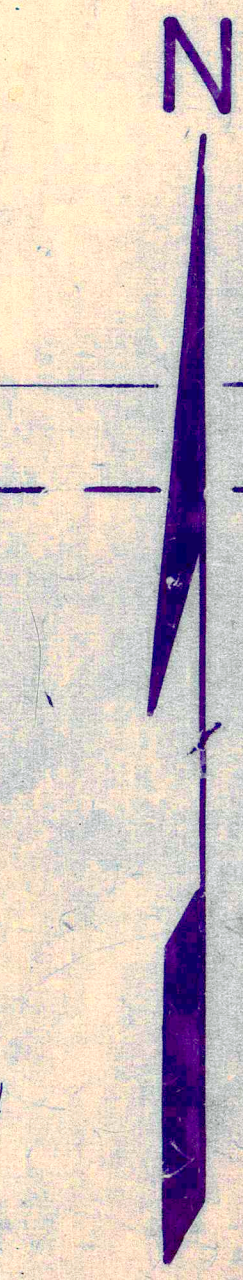
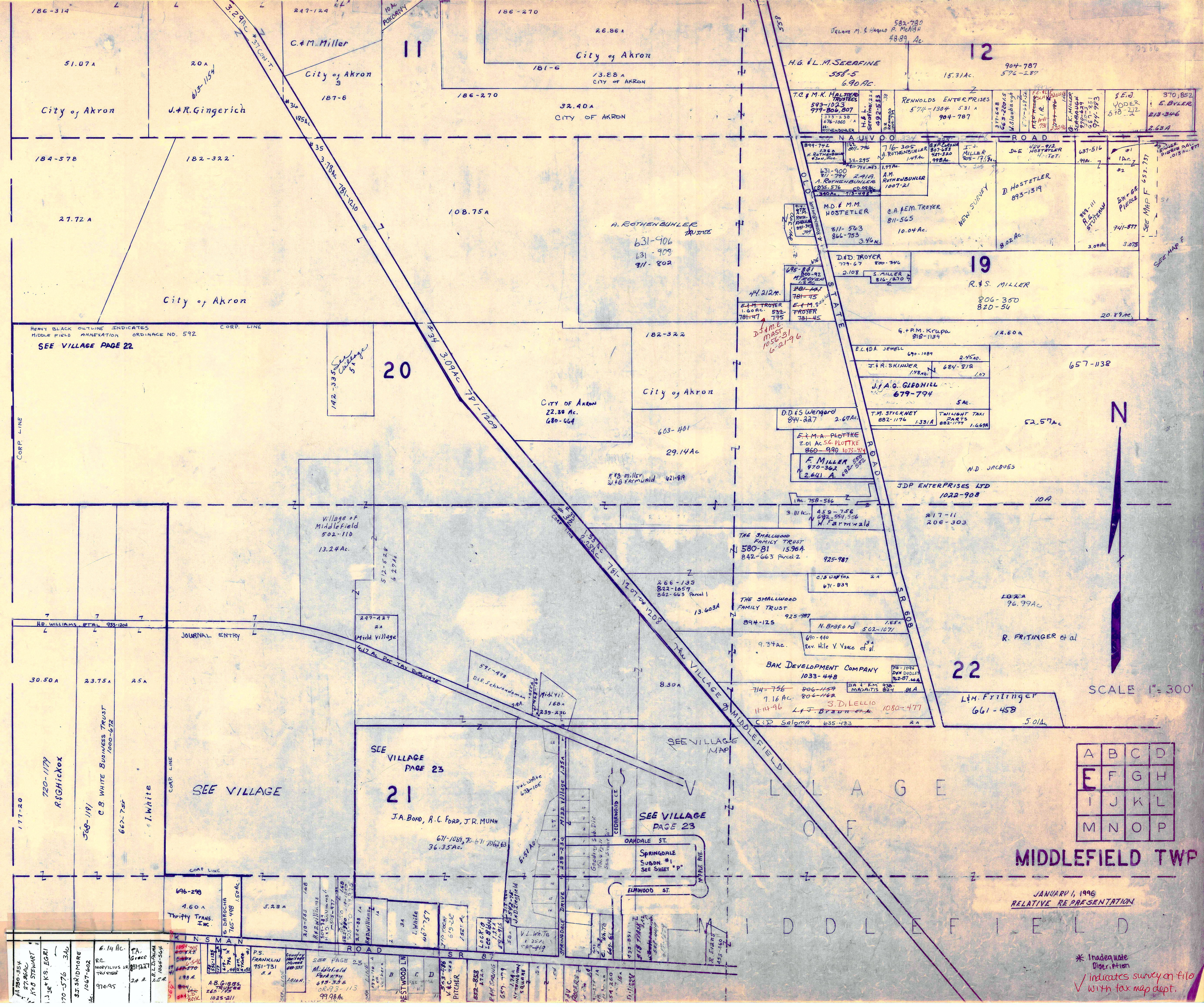
JANUARY 1, 1996
RELATIVE REPRESENTATION

A	B	C	D
E	F	G	H
I	J	K	L
M	N	O	P

* Inadequate
Description
✓ indicates
survey on file
with tax map
dept.

MIDDLEFIELD TWP.

BURTON TOWNSHIP



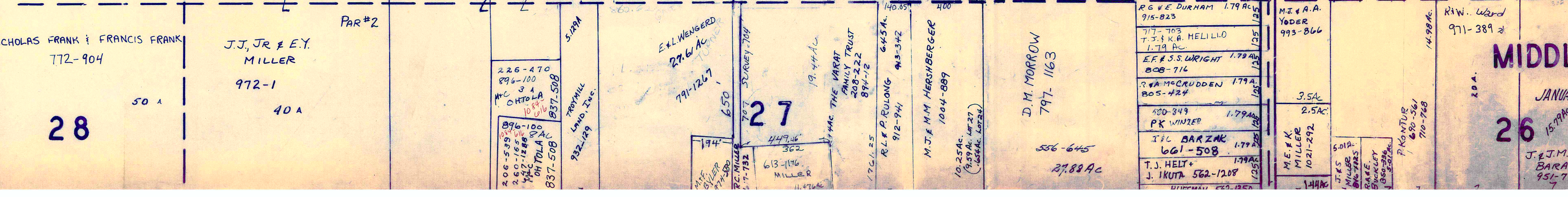
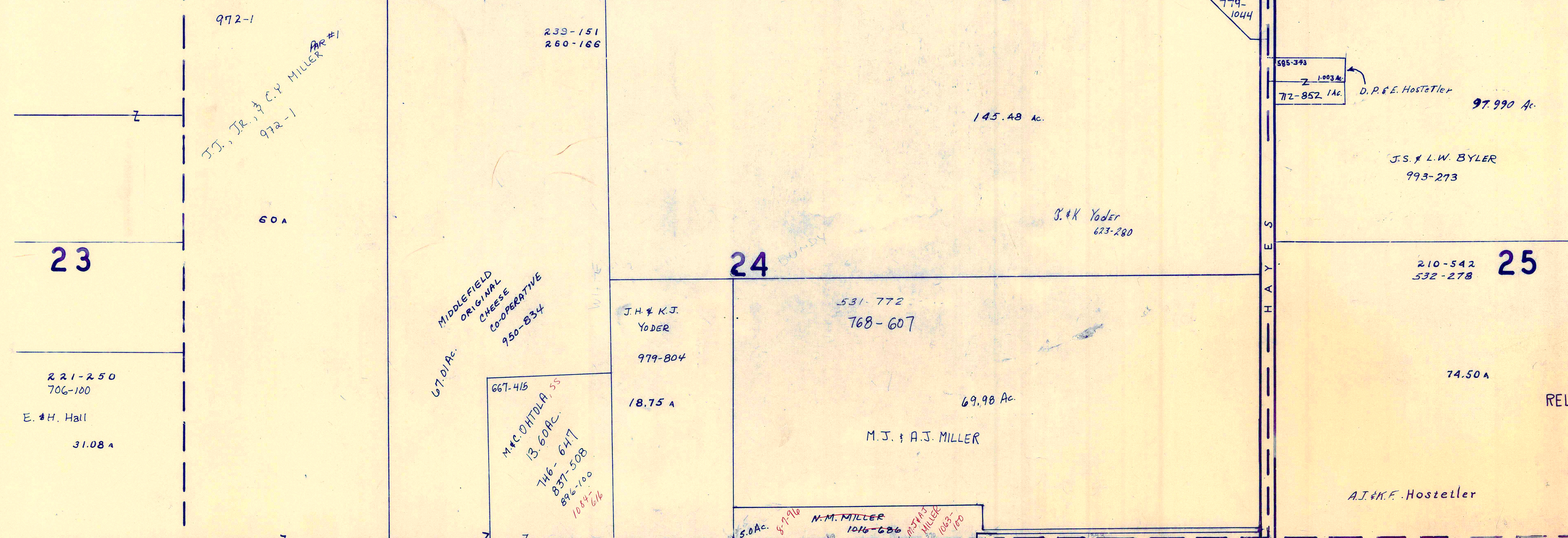
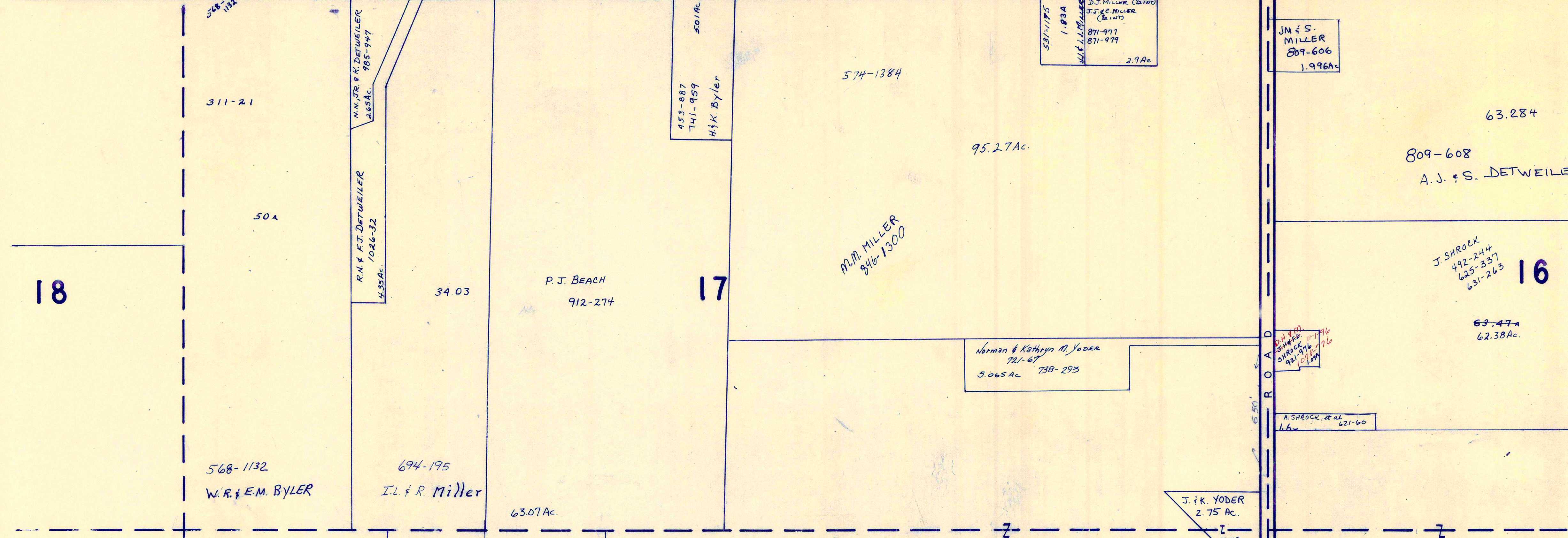
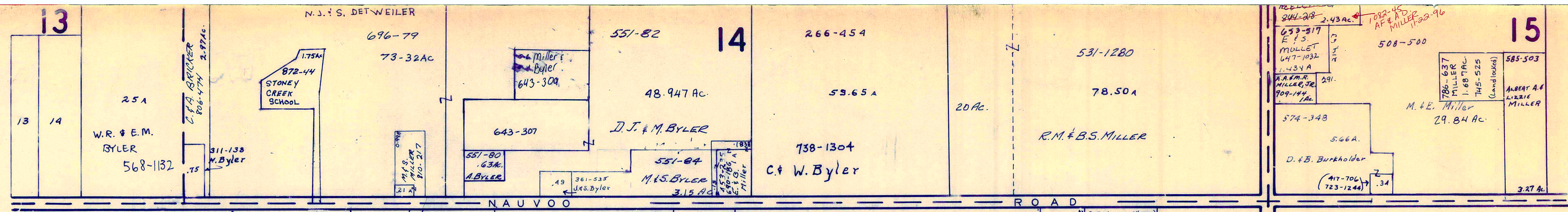
SCALE 1" = 300'

A	B	C	D
E	F	G	H
I	J	K	L
M	N	O	P

MIDDLEFIELD TWP

JANUARY 1, 1996
RELATIVE REPRESENTATION

* Inadequate
Description
✓ indicates survey on file
with tax map dept.



✓ indicates survey on file with tax map dept.

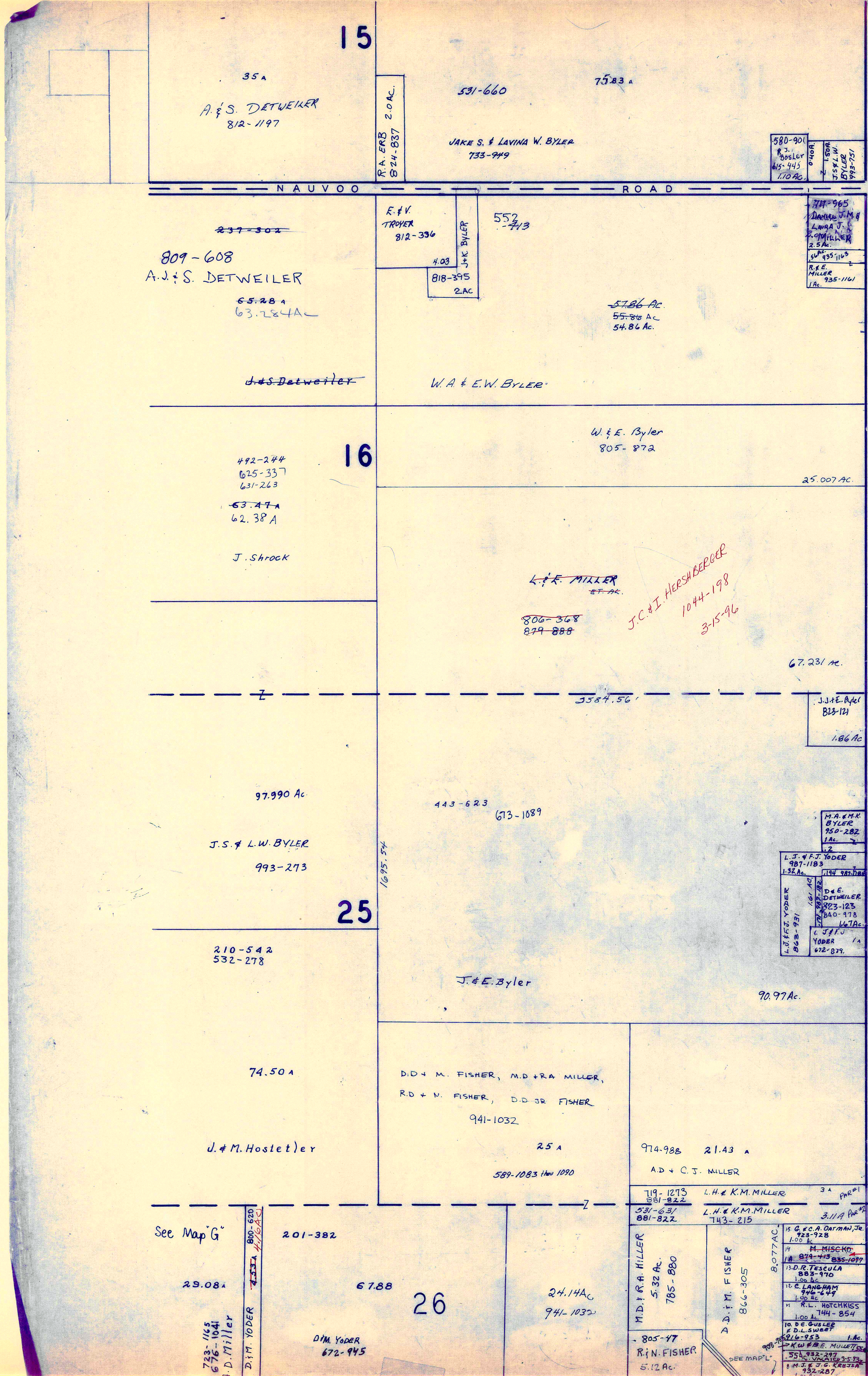
SCALE 1"=300'

RELATIVE REPRESENTATION

A	B	C	D
E	F	G	H
I	J	K	L
M	N	O	P

MIDDLEFIELD TWP.

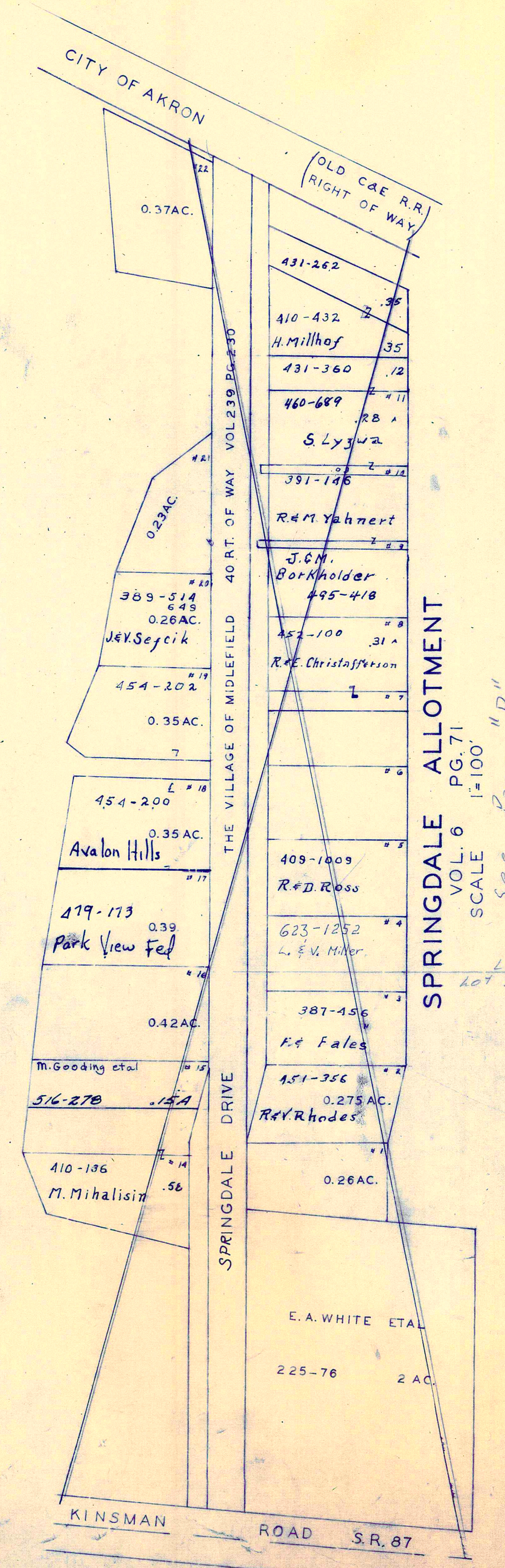
JANUARY 1, 1996
 854-532
 *Inadequate Description
 D.M. Morrow
 1350 Yoder



TRUMBULL COUNTY

KINSMAN ROAD 87	
1	467A A L. L. HERRICK 1870-1880 1870-1880 1870-1880
2	467B B M. A. TOPYARD 175-114
3	467C C R. M. PETRICK 755-991
4	467D D D. E. DETWEILER 823-125 840-178 L. J. YODER 987-1183 132A
5	467E E C. S. SEARS 1019-910
6	467F F R. E. D. SMITH 628-295
7	467G G R. S. MILLER
8	467H H H. E. KUSMAUL 881-1255
9	467I I VACATED G. S. GRESCH 196A
10	467J J 576-910 16 C. G. DODD 886-973
11	467K K G. H. R. R. HENNETTI 1015-252
12	467L L A. R. Buehlem 485-485 652-624
13	467M M J. J. CHERNY 894-671
14	467N N T. R. MOSS 10-22-92
15	467O O 703-1299

315-363 Agreement of Restriction
CRESTWOOD SUB. DIV.
VOL. 6 PG. 77
LOT 30
SCALE 1"=200'



SPRINGDALE ALLOTMENT
VOL. 6 PG. 71
SCALE 1"=100'
See Page "P"

SCALE 1"=300'

* Inadequate Description
Indicates survey on file w/ tax map dept.
JANUARY 1, 1996

A	B	C	D
E	F	G	H
I	J	K	L
M	N	O	P

MIDDLEFIELD TWP.
RELATIVE REPRESENTATION



SEE VILLAGE OF MIDDLEFIELD

28

MIDDLEFIELD

VILLAGE

32

33

MIDDLEFIELD TWP.

JANUARY 1, 1996

RELATIVE REPRESENTATION

Indicates survey on file with tax map dept.
* Inadequate description

SEE MAP "K"

SCALE 1" = 300'

A	B	C	D
E	F	G	H
I	J	K	L
M	N	O	P

38

E.J. R. Troyer

11.735 AC.

SEE PAGE 21

IMPROVEMENT COMPANY
696-341 1009-1072
44,133 AC.

571-1126
THE FEDERAL
IMPROVEMENT
CO.

1009-1197

1009-1197

1009-1197

1009-1197

1009-1197

1009-1197

1009-1197

1009-1197

1009-1197

1009-1197

1009-1197

1009-1197

1009-1197

1009-1197

1009-1197

1009-1197

1009-1197

1009-1197

1009-1197

1009-1197

1009-1197

1009-1197

1009-1197

1009-1197

1009-1197

1009-1197

1009-1197

1009-1197

1009-1197

1009-1197

1009-1197

1009-1197

1009-1197

1009-1197

1009-1197

1009-1197

1009-1197

1009-1197

1009-1197

1009-1197

1009-1197

1009-1197

1009-1197

1009-1197

1009-1197

1009-1197

1009-1197

1009-1197

1009-1197

1009-1197

1009-1197

1009-1197

1009-1197

1009-1197

1009-1197

1009-1197

1009-1197

1009-1197

1009-1197

1009-1197

1009-1197

1009-1197

1009-1197

1009-1197

1009-1197

1009-1197

1009-1197

1009-1197

1009-1197

1009-1197

1009-1197

1009-1197

1009-1197

1009-1197

1009-1197

1009-1197

1009-1197

1009-1197

1009-1197

1009-1197

1009-1197

1009-1197

1009-1197

1009-1197

1009-1197

1009-1197

1009-1197

1009-1197

1009-1197

1009-1197

1009-1197

1009-1197

1009-1197

1009-1197

1009-1197

1009-1197

1009-1197

1009-1197

1009-1197

1009-1197

1009-1197

1009-1197

1009-1197

1009-1197

1009-1197

1009-1197

1009-1197

1009-1197

1009-1197

1009-1197

1009-1197

1009-1197

1009-1197

1009-1197

1009-1197

1009-1197

1009-1197

1009-1197

1009-1197

1009-1197

1009-1197

1009-1197

1009-1197

1009-1197

1009-1197

1009-1197

1009-1197

1009-1197

1009-1197

1009-1197

1009-1197

1009-1197

1009-1197

1009-1197

1009-1197

1009-1197

1009-1197

1009-1197

1009-1197

1009-1197

1009-1197

1009-1197

1009-1197

1009-1197

1009-1197

1009-1197

1009-1197

1009-1197

1009-1197

1009-1197

1009-1197

1009-1197

1009-1197

1009-1197

1009-1197

1009-1197

1009-1197

1009-1197

1009-1197

1009-1197

1009-1197

1009-1197

1009-1197

1009-1197

1009-1197

1009-1197

1009-1197

1009-1197

1009-1197

1009-1197

1009-1197

1009-1197

1009-1197

1009-1197

1009-1197

1009-1197

1009-1197

1009-1197

1009-1197

1009-1197

1009-1197

1009-1197

1009-1197

1009-1197

1009-1197

1009-1197

1009-1197

1009-1197

1009-1197

1009-1197

1009-1197

1009-1197

1009-1197

1009-1197

1009-1197

1009-1197

1009-1197

1009-1197

1009-1197

1009-1197

1009-1197

1009-1197

1009-1197

1009-1197

1009-1197

1009-1197

1009-1197

1009-1197

1009-1197

1009-1197

1009-1197

1009-1197

1009-1197

1009-1197

1009-1197

1009-1197

1009-1197

1009-1197

1009-1197

1009-1197

1009-1197

1009-1197

1009-1197

1009-1197

1009-1197

1009-1197

1009-1197

1009-1197

1009-1197

1009-1197

1009-1197

1009-1197

1009-1197

1009-1197

1009-1197

28

50 Ac.
NICHOLAS FRANK & FRANCIS FRANK
772-904

PAR #2

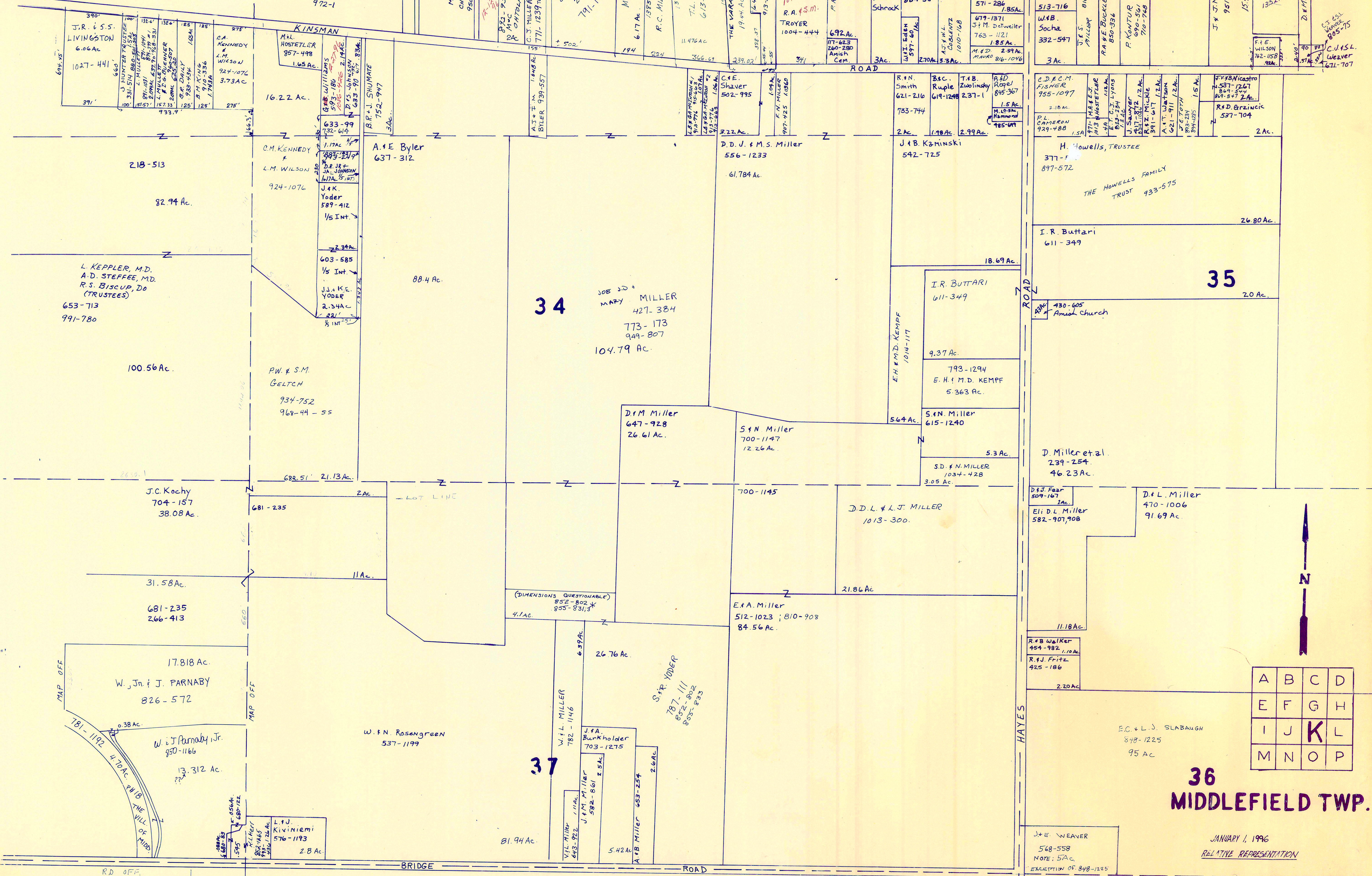
40 Ac.
J.J., JR. & E.Y. MILLER
972-1

27

E.L. WENGERD
27-61Ac
791-1267

26

D.M. YODER
854-532

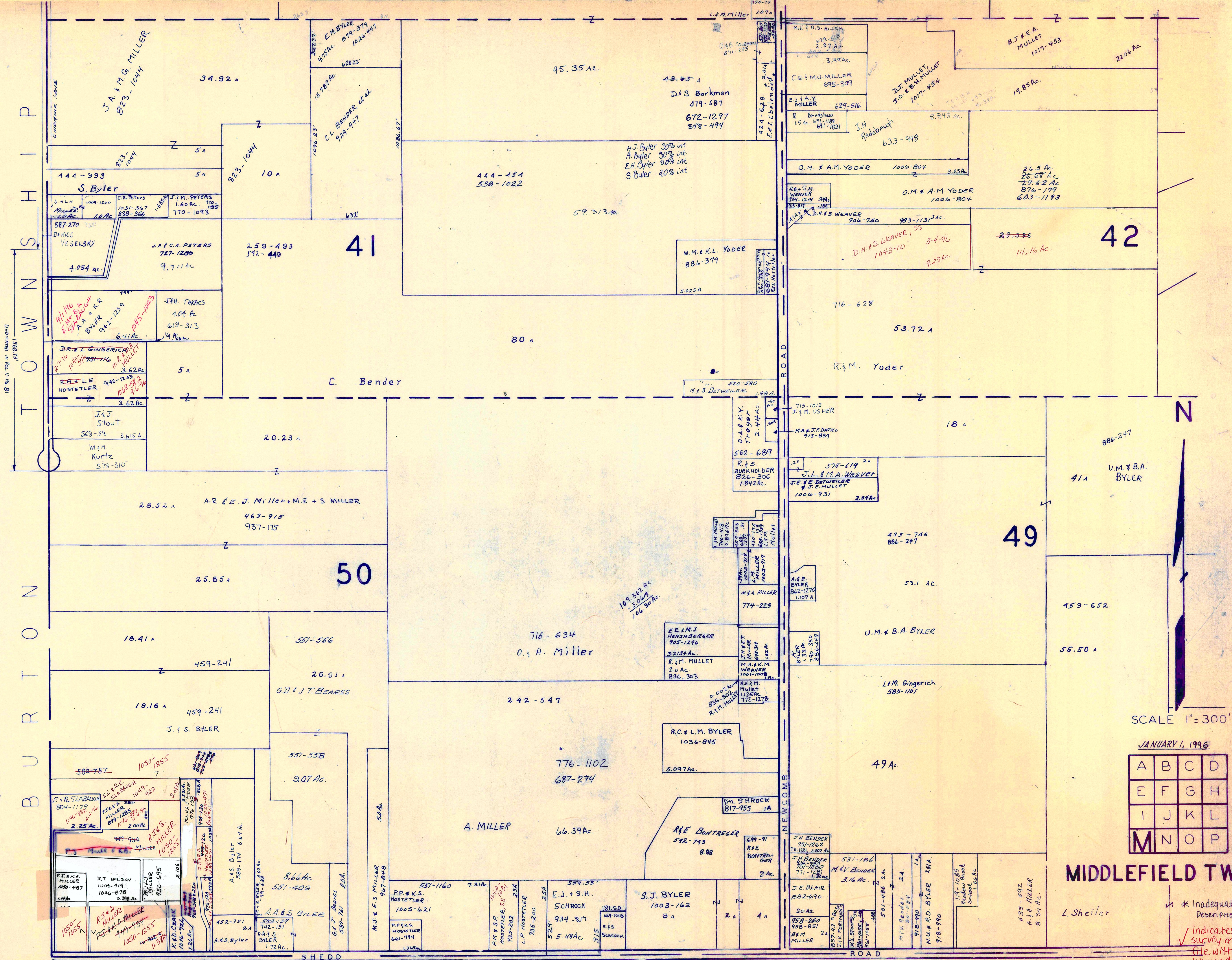


A	B	C	D
E	F	G	H
I	J	K	L
M	N	O	P

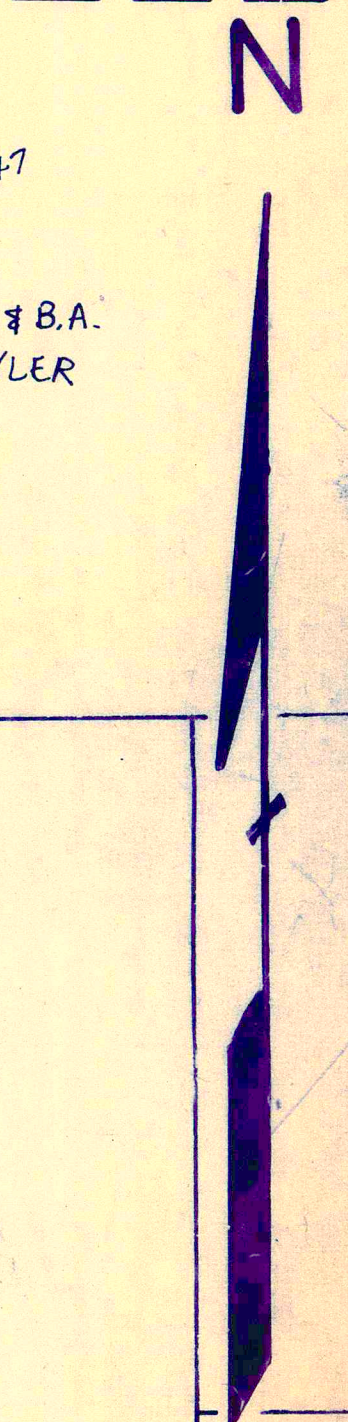
36
MIDDLEFIELD TWP.

JANUARY 1, 1996
RELATIVE REPRESENTATION

* Inadequate description
✓ indicates survey on file with tax map dept.



TOWNSHIP
 BURTOWN
 1878-1911
 1588.37
 1878-1911
 1588.37



SCALE 1" = 300'

JANUARY 1, 1996

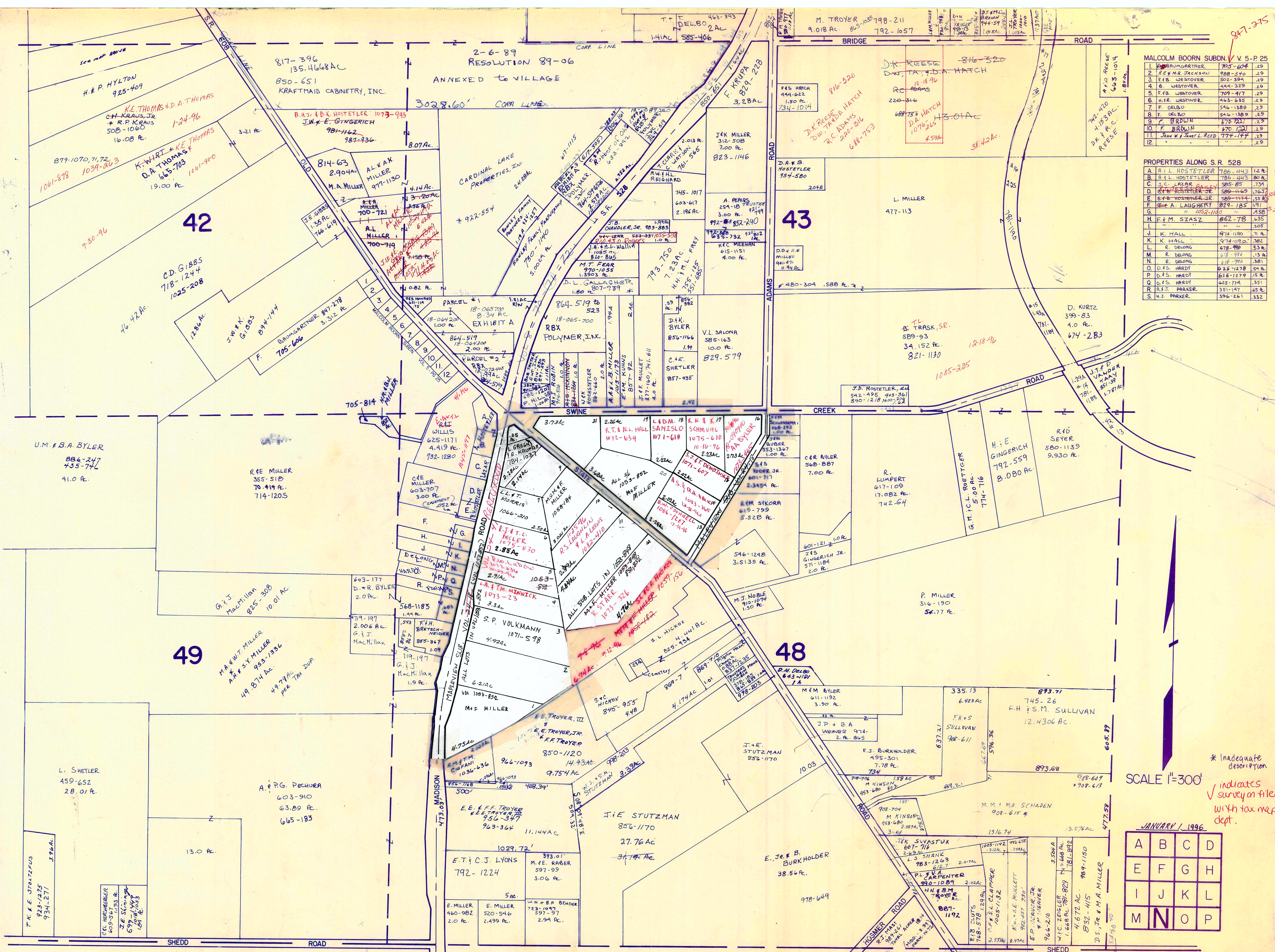
A	B	C	D
E	F	G	H
I	J	K	L
M	N	O	P

MIDDLEFIELD TWP.

* Inadequate Description
 ✓ indicates survey on file with tax map dept.

P A R K M A N T O W N S H I P

RELATIVE REPRESENTATION



MALCOLM BOORN SUBD V 5-P 25

1	W. M. GARTNER	705-674	.29
2	F. E. M. JACKSON	788-370	.29
3	F. B. WESTOVER	502-394	.29
4	F. B. WESTOVER	444-329	.29
5	F. B. WESTOVER	709-417	.29
6	F. B. WESTOVER	463-635	.29
7	F. DELBO	546-1389	.29
8	F. DELBO	546-1389	.29
9	F. BROWN	670-1201	.29
10	F. BROWN	670-1201	.29
11	John W. & Janet L. Reed	774-174	.29
12			.29

PROPERTIES ALONG S.R. 528

A	R. L. HOSTETLER	786-443	1.2
B	R. L. HOSTETLER	786-443	80
C	J. C. LAZAR	585-85	7.34
D	S. F. HOSTETLER JR.	589-1149	7.63
E	S. F. HOSTETLER JR.	589-1149	5.8
F	A. LAUGHERY	829-185	1.57
G		1052-110	4.58
H	F. M. SZASZ	862-78	6.35
I			3.05
J	K. HALL	974-1190	7.1
K	K. HALL	974-1190	5.82
L	R. DELONG	678-98	5.3
M	R. DELONG	678-98	1.3
N	R. DELONG	678-98	3.81
O	D. S. HARDY	625-1278	5.4
P	D. S. HARDY	625-1279	1.5
Q	D. S. HARDY	625-1274	3.51
R	R. J. PARKER	351-147	6.5
S	H. J. PARKER	396-261	3.32

SCALE 1"=300'

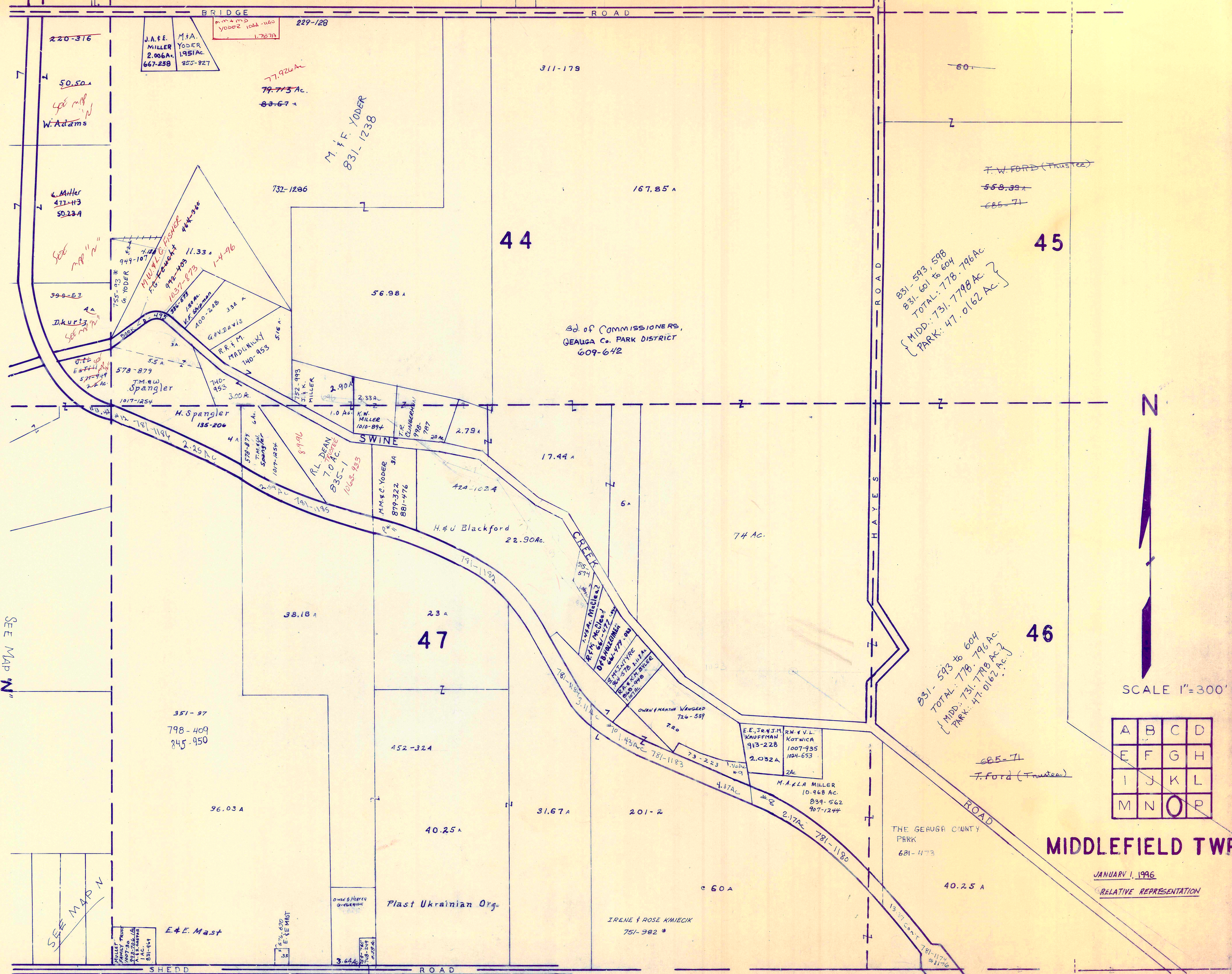
JANUARY 1, 1996

A	B	C	D
E	F	G	H
I	J	K	L
M	N	O	P

MIDDLEFIELD TWP. "N"
RELATIVE REPRESENTATION

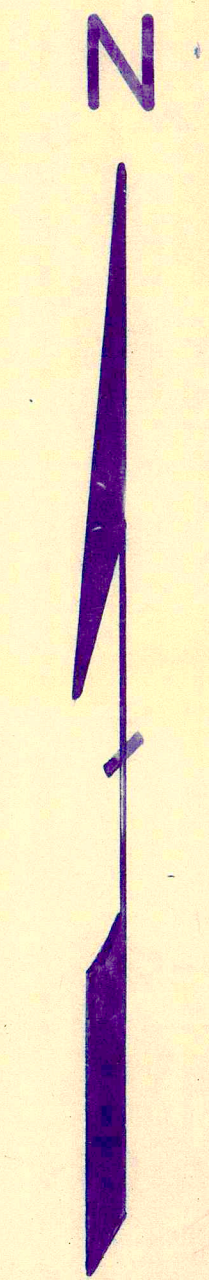
P A R K M A N T O W N S H I P

* Inadequate description
✓ indicates survey on file with tax map dept.



SEE MAP "N"

SEE MAP "N"



SCALE 1"=300'

A	B	C	D
E	F	G	H
I	J	K	L
M	N	O	P

MIDDLEFIELD TWP.

JANUARY 1, 1996
RELATIVE REPRESENTATION

PARKMAN TOWNSHIP

* DOES NOT MEET STANDARDS

* Inadequate description
✓ indicates survey on file with tax map dept

MIDDLEFIELD JMB

45

WHITEFORD WOODS CO.
500 AC
775-396

46

831-601 to 604
TOTAL: 778.796 AC.
{ MID: 731.7798 AC }
{ PARK: 47.0162 AC }

TAX DUPLICATE
(281.57 AC TOTAL)
T. Ford
(TRUSTEE)

685-71
T. Ford

SWINE CREEK ROAD

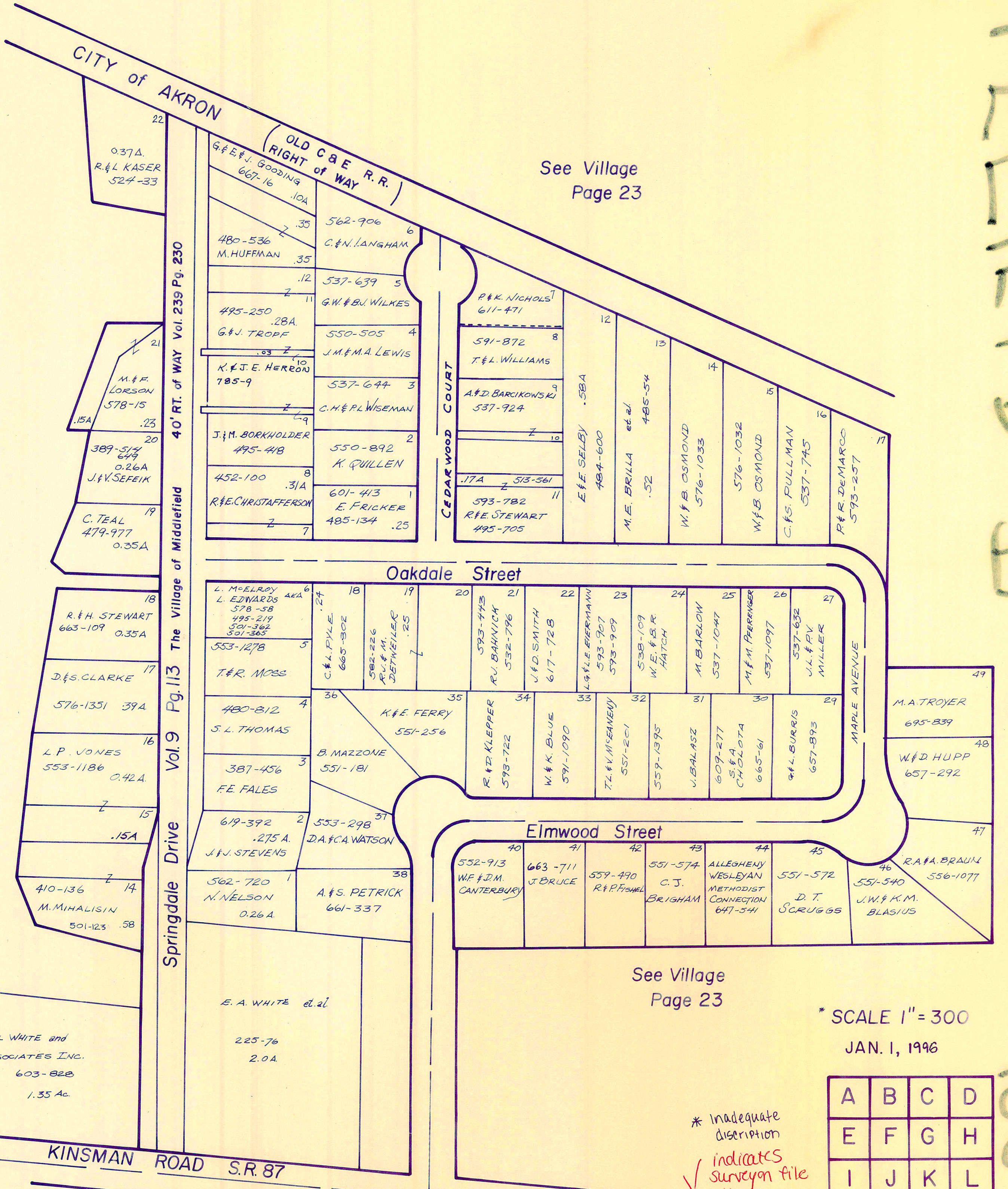
PARKMAN TWP.

TRUMBULL COUNTY

BUNDSBURG ROAD

CITY of AKRON
RIGHT of WAY
OLD CBE R.R.

See Village Page 23



Springdale Drive Vol. 9 Pg. 113 The Village of Middlefield
40 FT. of WAY Vol. 239 Pg. 230

See Village Page 23

* SCALE 1" = 300

JAN. 1, 1946

* Inadequate description indicates survey on file with tax map dept.

A	B	C	D
E	F	G	H
I	J	K	L
M	N	O	P

MIDDLEFIELD TWP.

RELATIVE REPRESENTATION

* ONLY TWP. MAP

1886